



ARTIST'S IMPRESSION

# MODERN ELEGANCE IN HIGHTSTED

2 Berryfields Ave, Hightsted

This modern home embraces its corner setting with a thoughtful dual pavilion design that balances street presence with intimate privacy. The architecture responds to the site's prominence through carefully considered massing and orientation, while generous glazing and strategically placed skylights create a light-filled interior.

Contemporary materials, including James Hardie's new Board and Batten cladding, establish a refined aesthetic that speaks to both durability and timeless design appeal.

**Total Area** 237.43 m<sup>2</sup>



2



3



2.5

**David Reid Homes Canterbury**  
Canterbury Design & Development Ltd

021 0272 8839  
Unit 2/213 Blenheim Road,  
Christchurch 8149

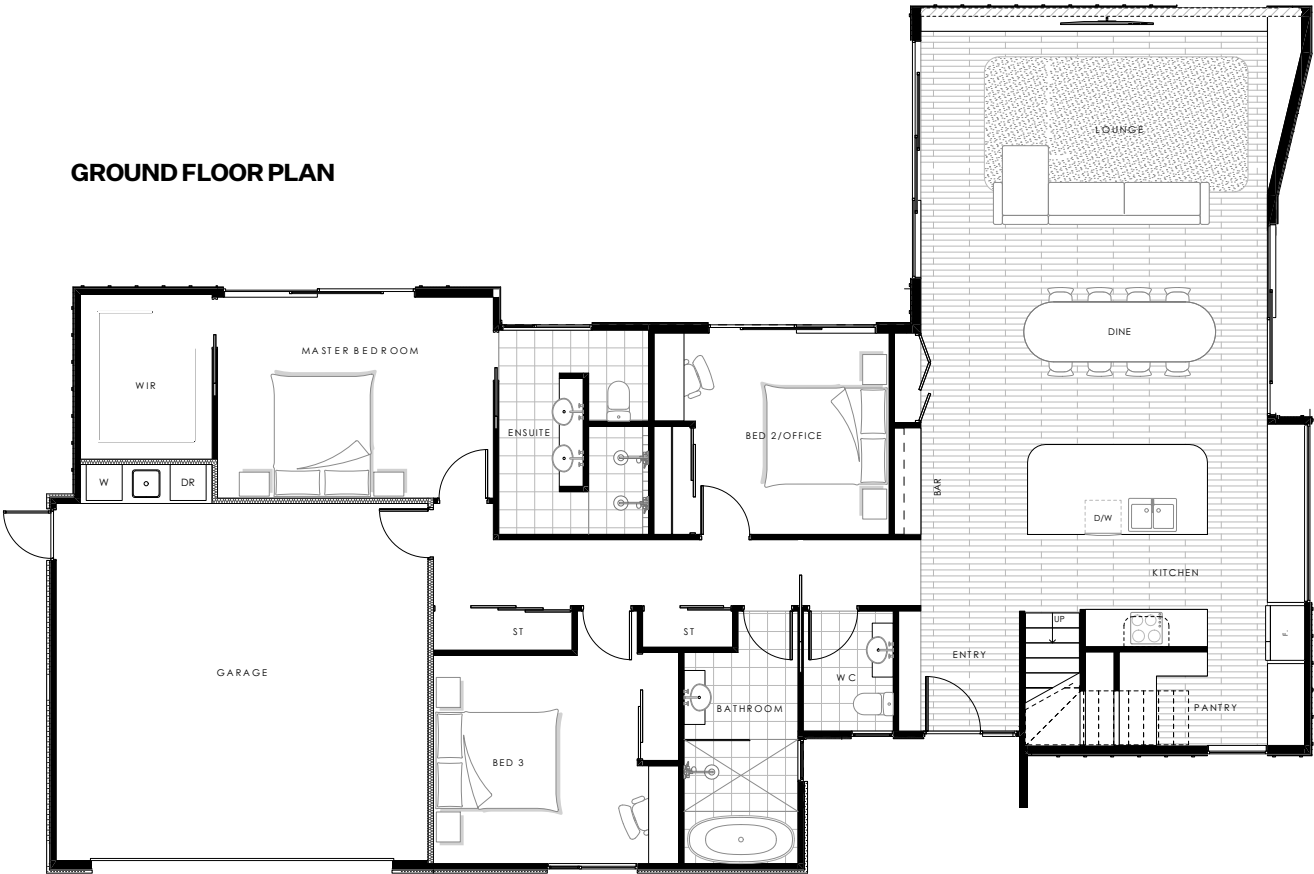
carl.fordyce@  
**davidreidhomes.co.nz**

**View online at**  
[https://davidreidhomes.co.nz/  
our-locations/canterbury/](https://davidreidhomes.co.nz/our-locations/canterbury/)

**DAVID REID**  
HOMES

EXPERIENCE THE NEW


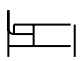

GROUND FLOOR PLAN



2 Berryfields Ave, Highsted

FIRST FLOOR PLAN

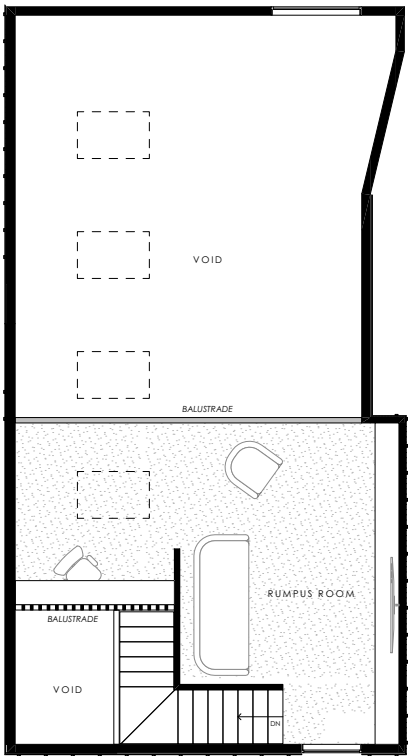
Total Area 237.43 m<sup>2</sup>

	2
	3
	2.5

The two pavilion forms work in harmony, with one engaging the street frontage while the other shelters private living spaces behind. This compositional strategy allows the home to feel grounded and purposeful on its corner allotment without compromising the occupants' comfort and seclusion.

Oversized windows and full height glazed doors frame outdoor views and flood interiors with natural light, while ceiling skylights enhance the spatial quality and bring additional illumination to the main living area. The recessed entry provides a welcoming transition from public to private realm, reinforcing the home's sense of sanctuary.

Material selection plays a defining role, with James Hardie Board and Batten cladding delivering crisp, contemporary lines alongside standing seam metal roofing. A palette that ensures longevity while maintaining architectural integrity.



All plans are copyright and no part may be reproduced or copied without prior written consent from David Reid Homes

©DAVID REID HOMES



ARTIST'S IMPRESSION



ARTIST'S IMPRESSION



ARTIST'S IMPRESSION

## Specifications

### Exterior

- James Hardie
- Resene Rockcote
- Colorsteel TRib
- Colorsteel downpipes & fascia
- Insulated Windsor garage door
- Window joinery package by First Windows

### Interior

- Interior package by Next Dore
- 2200 standard door & wardrobe height
- Laminate timber flooring
- Tiled bathroom & ensuite

### Kitchen

- Joinery package by Finesse Joinery
- Designer appliance package by Harvey Norman

### Bathrooms

- Bathroom package by Harrison Bloy

### Electrical

- Smart home package by PDL Wiser Smart Home

### Heating

- Ducted heating throughout (with wifi control)
- Fireplace

### Insulation

- Acoustic batts to bathrooms and midfloor

### Extra features

- Mezzanine Floor
- Cathedral Ceiling
- Timber hardwood cladding
- Large attic trusse storage area

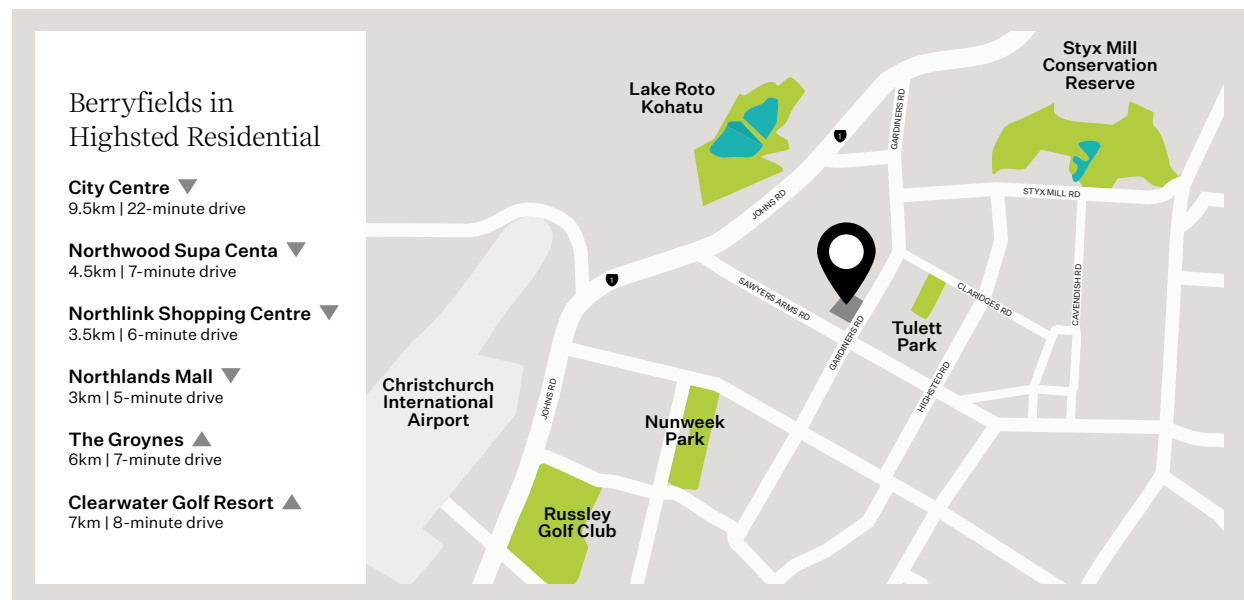


# Location

Located at Berryfields in Highsted on the north-western side of Gardiners Road, this home offers easy access to the central city, the Northern Motorway, and the Johns Road ring road, providing convenient routes to the airport and southern suburbs.

Just minutes from Northwood Supa Centa, Northlink Shopping Centre, and Northlands Mall, it's also perfectly positioned for leisure, with The Groynes, Clearwater Golf Resort, and Styx Mill Reserve nearby.

These are just a few reasons why Highsted is one of Christchurch's most sought-after locations.



Contact Carl today to find out more!

## EXPERIENCE THE NEW

**David Reid Homes Canterbury**  
Canterbury Design & Development Ltd

021 0272 8839  
Unit 2/213 Blenheim Road,  
Christchurch 8149

carl.fordyce@  
davidreidhomes.co.nz

View online at  
davidreidhomes.co.nz/our-  
homes/showhomes

**DAVID REID**  
HOMES