




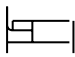

ARTIST'S IMPRESSION

BUILT AROUND HOW YOU LIVE

Lot 52, Highsted Residential

Welcome to this thoughtfully designed home on Cinnamon Lane, where everyday living flows naturally from one space to the next. Three generous bedrooms are complemented by a dedicated media room, giving you the flexibility to spread out, whether that's movie nights, a home office, or a quiet retreat away from the main living areas. The open-plan kitchen, dining, and living spaces sit at the heart of the home under soaring raking ceilings on scissor trusses, creating a light-filled environment that feels expansive well beyond its 180m² footprint. A well-proportioned pantry keeps the kitchen running smoothly, while the outdoor living area extends the social space when the weather invites it. The master bedroom is positioned privately at the rear, complete with ensuite and generous walk-in robe.

Total Area 185 m²

	2
	3
	2.5

David Reid Homes
Christchurch – North, Waimakariri & Hurunui
Bolder Developments Ltd

021 0272 8839

carl.fordyce@
davidreidhomes.co.nz

View online at
davidreidhomes.co.nz


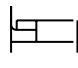

DAVID REID HOMES

EXPERIENCE THE NEW



Lot 52, Highsted Residential

Total Area 185 m²

	2
	3
	2.5

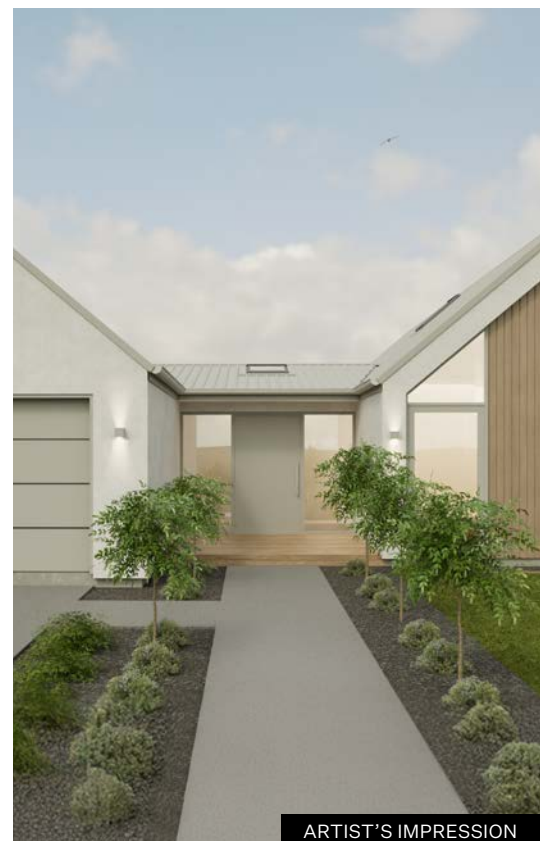
Every detail has been considered for the way people actually live.

A separate powder room means the main bathroom stays where it belongs, and the laundry and storage tuck away quietly so the home always feels calm and uncluttered.

Step outside and the generous outdoor living area becomes a natural gathering place, whether that's a relaxed weekend breakfast or an evening with friends. The double garage offers room for cars, bikes, and all the gear that comes with an active lifestyle.

Finished in rendered panel with selected timber vertical shiplap weatherboards, the exterior is clean and contemporary, sitting comfortably within Highsted Residential's established streetscape.

Titles due in October 2026.



All plans are copyright and no part may be reproduced or copied without prior written consent from David Reid Homes

©DAVID REID HOMES

ARTIST'S IMPRESSION



Specifications

Exterior

- Timber Cladding
- Rockcote Graphex
- Colorsteel TRib Longrun
- Colorsteel downpipes & fascia
- Window joinery

Interior

- Interior design package by Next Dore

Ensuite

- Double vanity
- Fully tiled walk-in shower
- Tiled underfloor heating

Kitchen

- Engineered stone benchtop
- Blum hardware
- Bosch appliances

Heating

- 2 x heatpumps
- Heated towel rails

Insulation

- R3.6 insulation to ceiling
- R2.8 insulation to walls (including garage)
- Insulated garage door

Extra features

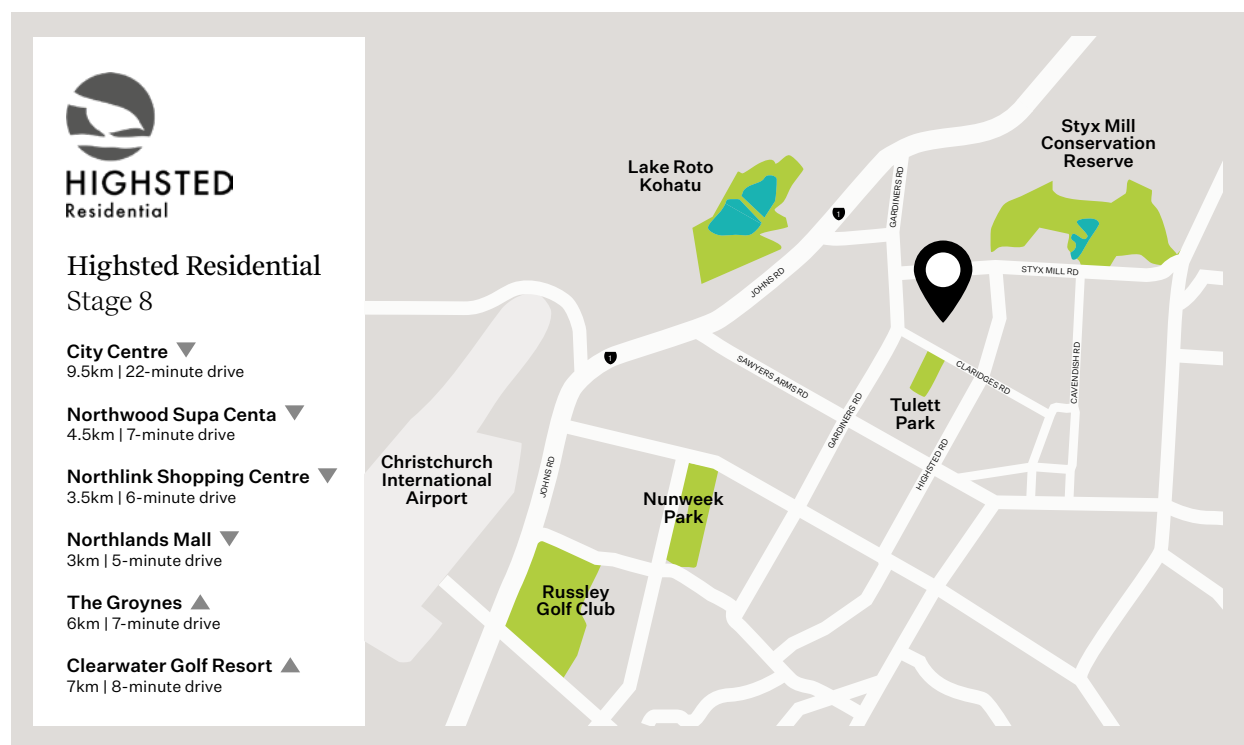
- Feature scissor trusses
- 2200 standard door & wardrobe height
- Large attic storage area
- Sky lights

Location

Located in Highsted Residential on the northwest corner of Christchurch with easy access to the central city, the Northern Motorway, and the Johns Road ring road, providing convenient routes to the airport and southern suburbs.

Just minutes from Northwood Supa Centa, Northlink Shopping Centre, and Northlands Mall, it's also perfectly positioned for leisure, with The Groynes, Clearwater Golf Resort, and Styx Mill Reserve nearby.

These are just a few reasons why Highsted is one of Christchurch's most sought-after locations.



Contact Carl today to find out more!

EXPERIENCE THE NEW

David Reid Homes
Christchurch – North, Waimakariri & Hurunui
Bolder Developments Ltd

021 0272 8839

carl.fordyce@
davidreidhomes.co.nz

View online at
davidreidhomes.co.nz

DAVID REID
HOMES