



A HIGHSTED MASTERPIECE

158 Gardiners Road, Highsted

Displaying the absolute best of David Reid Homes Canterbury, this home encompasses a spacious design with superior materials and workmanship.

This single level home offers a seamless blend of style, comfort, and functionality in sought-after Highsted is designed for modern living.

Featuring open-plan living, a designer kitchen, and expansive outdoor spaces, it's perfect for entertaining and relaxation.

The luxurious master suite, versatile additional bedrooms, and double garage complete this exceptional home.

Total Area 195 m²



2



3



2.5

David Reid Homes Canterbury
Canterbury Design & Development Ltd

021 0272 8839
Unit 2/213 Blenheim Road,
Christchurch 8149

carl.fordyce@
davidreidhomes.co.nz

View online at
davidreidhomes.co.nz/our-homes/showhomes

DAVID REID
HOMES

EXPERIENCE THE NEW



158 Gardiners Road, Highsted

Total Area 195 m²

	2
	3
	2.5

This home blends sophistication and practicality, with high ceilings, expansive windows, and quality finishes that enhance light and space. The kitchen features premium appliances, ample storage, and a sleek island bench with black engineered stone, ideal for dining or entertaining. Dark cabinetry and walnut paneling create a striking contrast in this contemporary space.

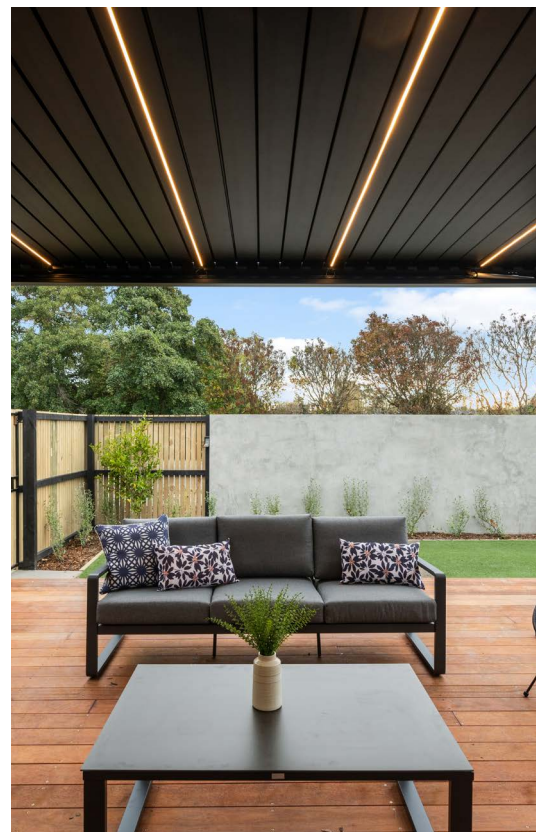
Thoughtful zoning ensures privacy, with the master suite tucked away for tranquility. A spacious bathroom, separate toilet, and dedicated laundry add convenience.

Outdoor living is effortless, with multiple decks for alfresco dining and relaxation. The landscaped section offers beauty and low-maintenance appeal.

Located near shopping, transport, and nature reserves, this home is designed for those who value modern elegance and easy living.

All plans are copyright and no part may be reproduced or copied without prior written consent from David Reid Homes

©DAVID REID HOMES





Specifications

Exterior

- Linea Oblique
- Rockcote Graphex
- Rockcote Cerano
- Colorsteel TRib Longrun 'Flaxpod'
- Colorsteel downpipes & fascia 'Flaxpod'
- Window joinery 'Flaxpod'
- Dominator insulated garage door 'Flaxpod'

Interior

- Feature scissor truss to kitchen/living/dining
- 2200 standard door & wardrobe height

Bathrooms

- Ensuite: double vanity
- Ensuite: fully tiled walk-in shower
- Bathroom: fully tiled shower
- Heated towel rails
- Tiled underfloor heating

Kitchen

- Benchtop: Lucino Classic engineered stone 'Sandy Black'
- Cabinet door fronts: Prime Iron Sand & Prime Hickory Walnut
- Blum hardware
- Bosh cooktop, oven & dishwasher

Flooring

- Entry & Kitchen: Luxury vinyl plank 'Harvest'
- Bathroom, laundry & WC: tiled
- Carpet: Cable Bay Feltex 'Haven'

Heating

- Daikin ducted heating throughout (with wifi control)
- Under tile heating to bathroom & ensuite
- Heated towel rails

Insulation

- R3.6 insulation to ceiling
- R2.8 insulation to walls

Extra features

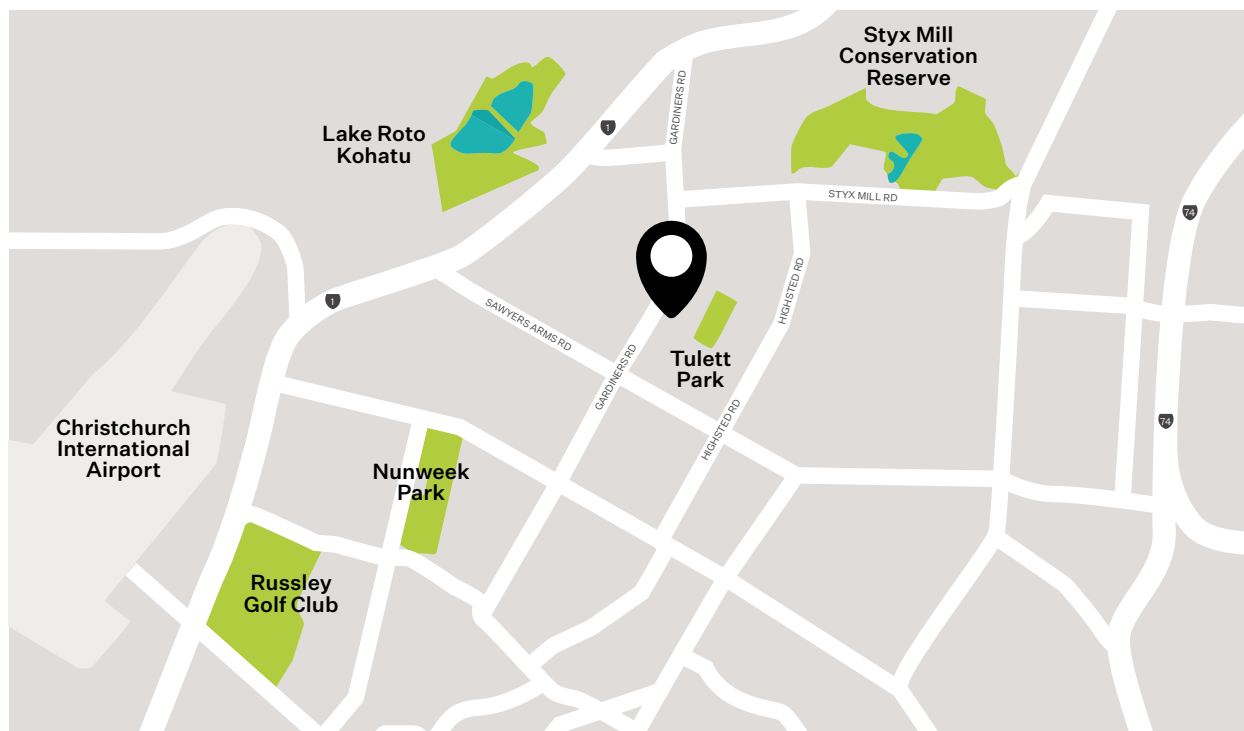
- Large attic trusse storage area
- Linea Oblique soffits

Location

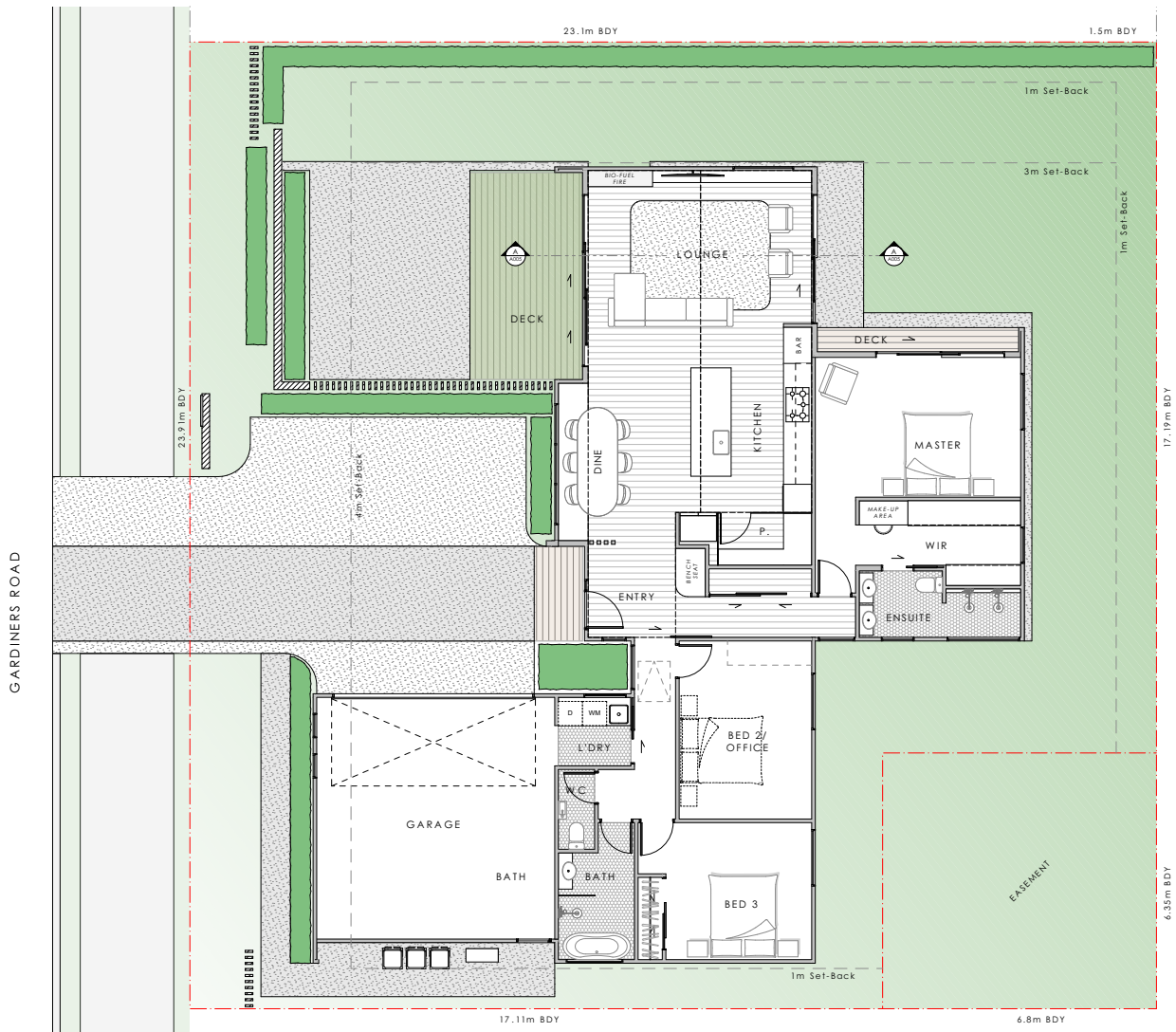
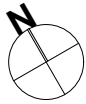
Located at 158 Gardiners Road, Highsted, in northwest Christchurch, this home offers easy access to the central city, Northern Motorway, and Johns Road ring road to the airport and south.

Just minutes from Northwood, Northlink Shopping Centre, and Northlands Mall, it's also perfectly positioned for leisure, with The Groynes, Clearwater Golf Resort, and Styx Mill Reserve nearby.

These are just a few reasons why Highsted is one of Christchurch's most sought-after locations.



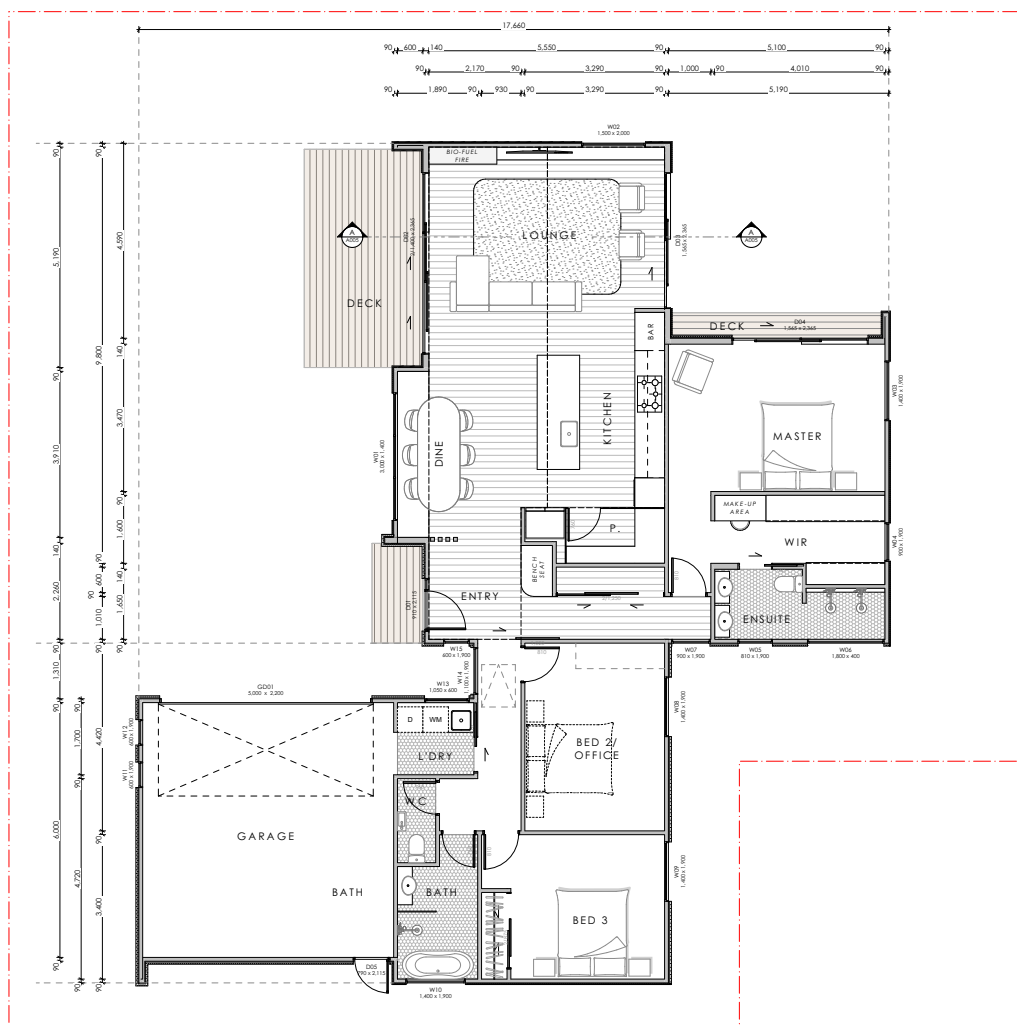
Site Plan



DAVID REID
HOMES





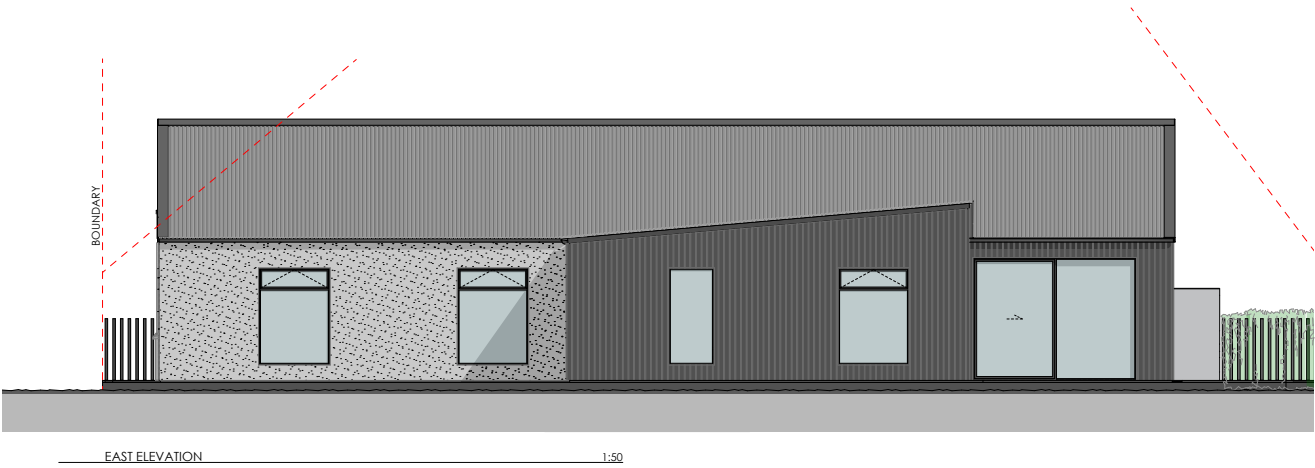


Elevations

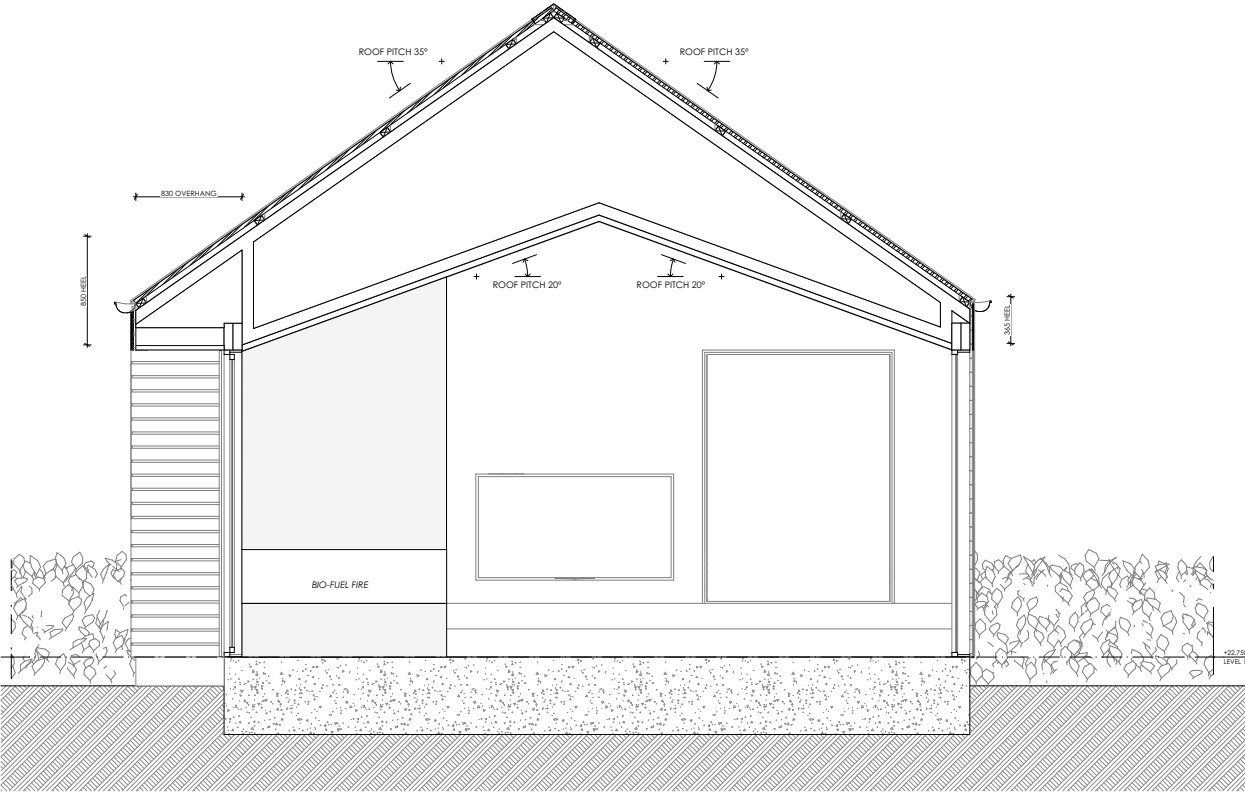


DAVID REID
HOMES

Elevations



Cross Section

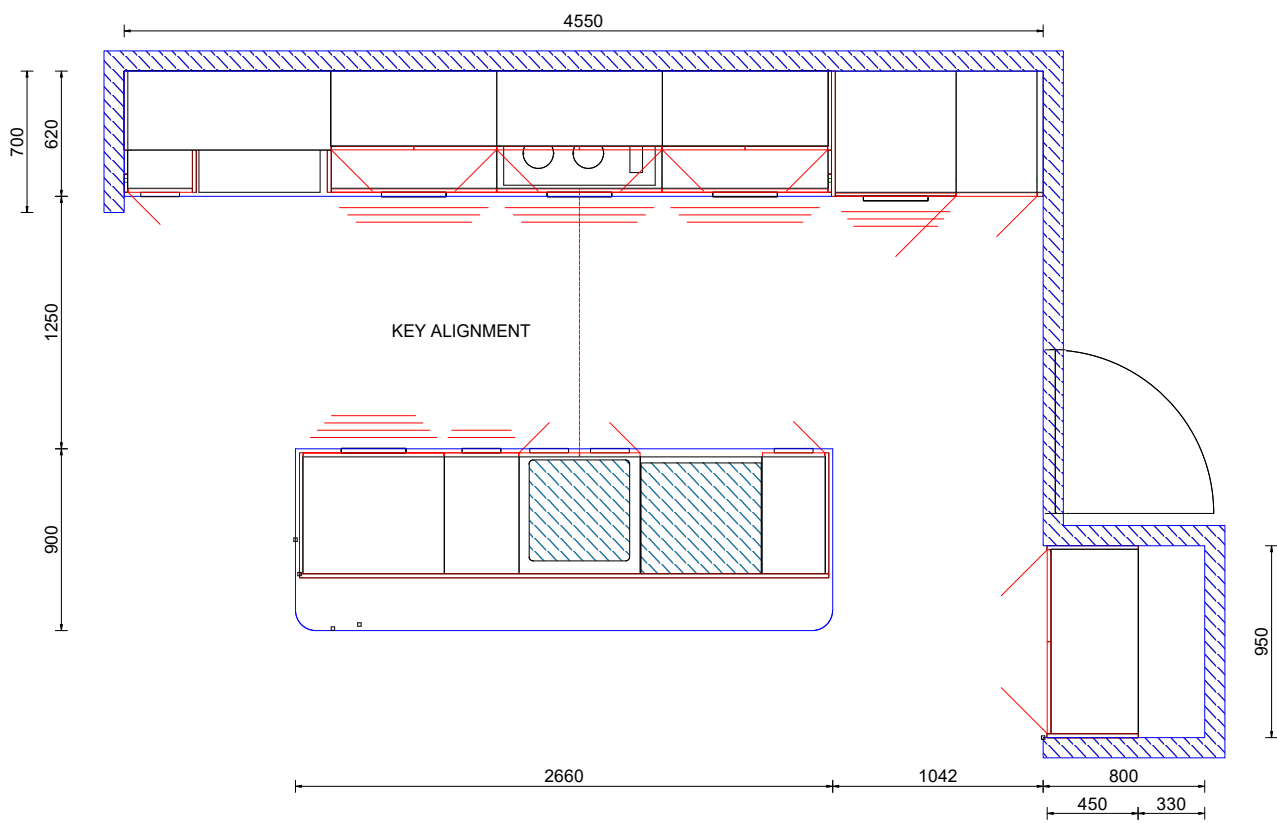


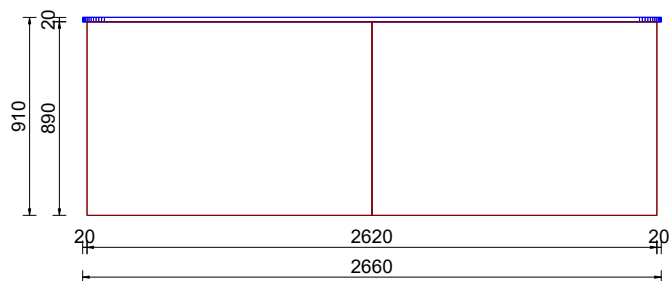
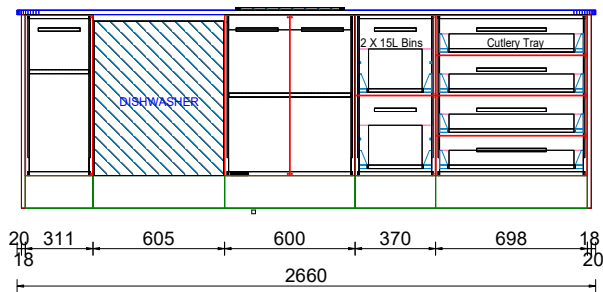
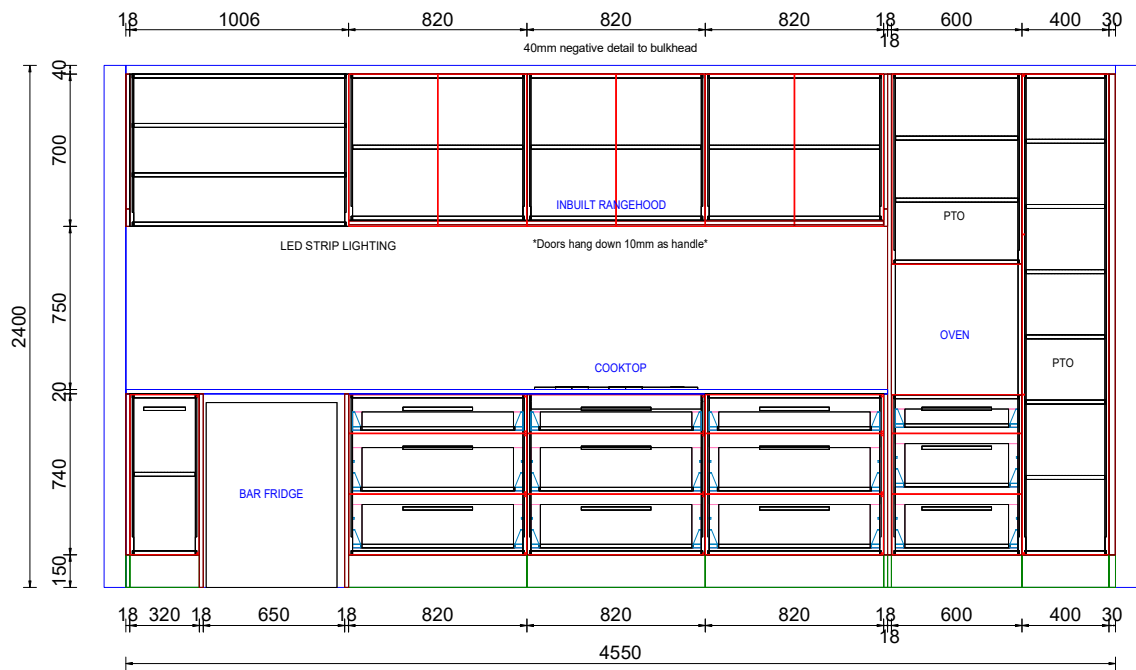
DAVID REID
HOMES





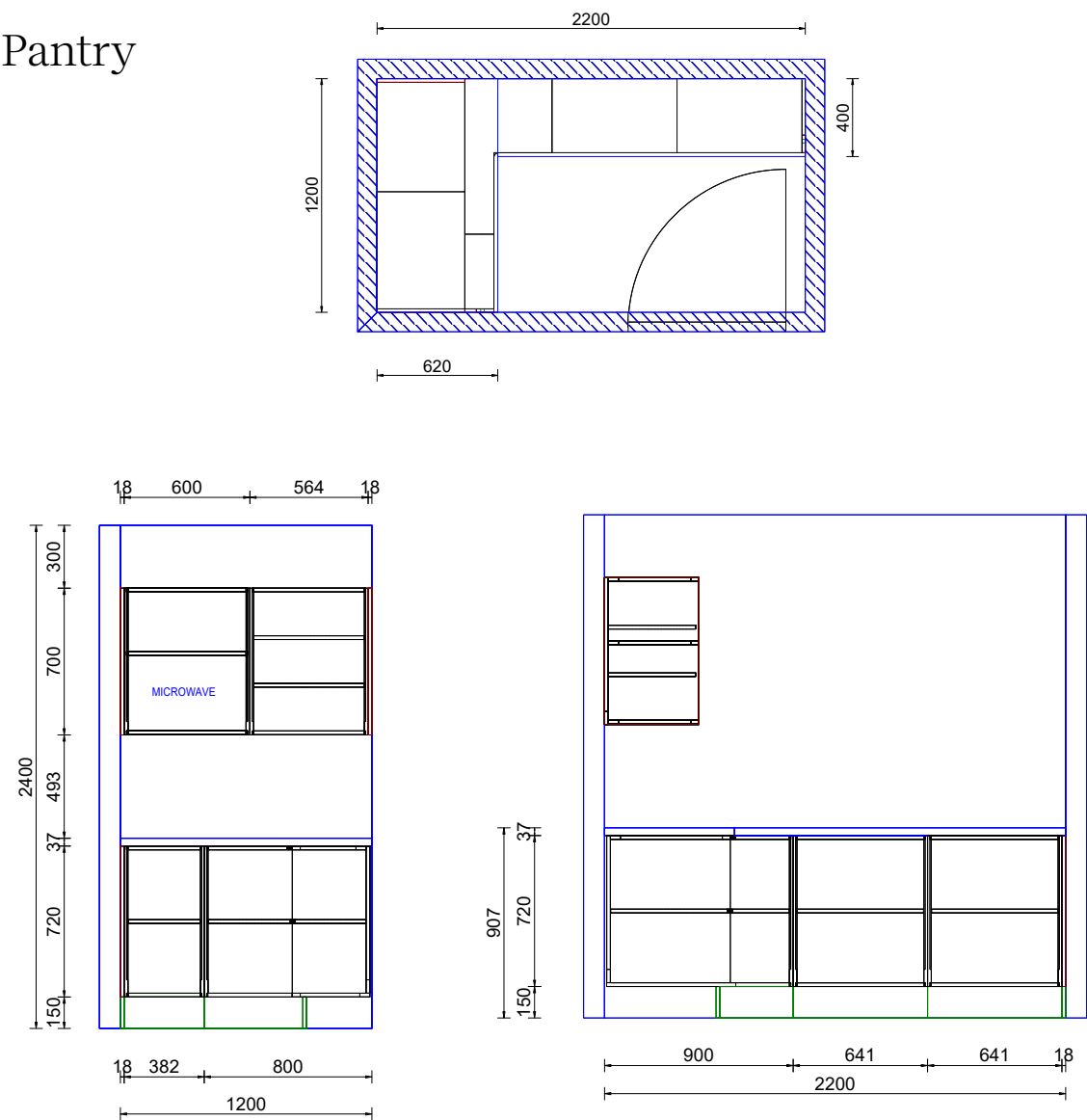
Kitchen



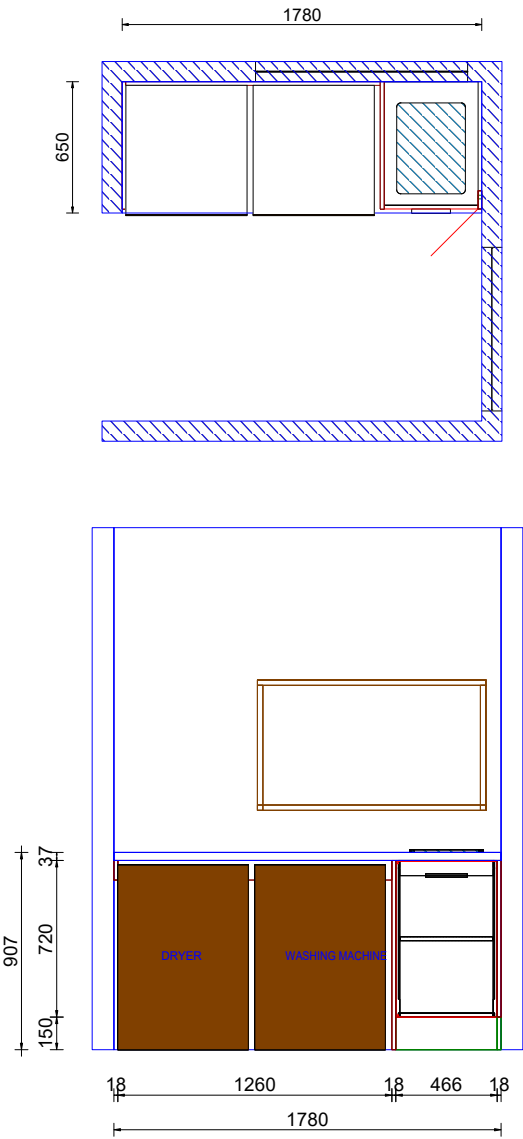


DAVID REID
HOMES

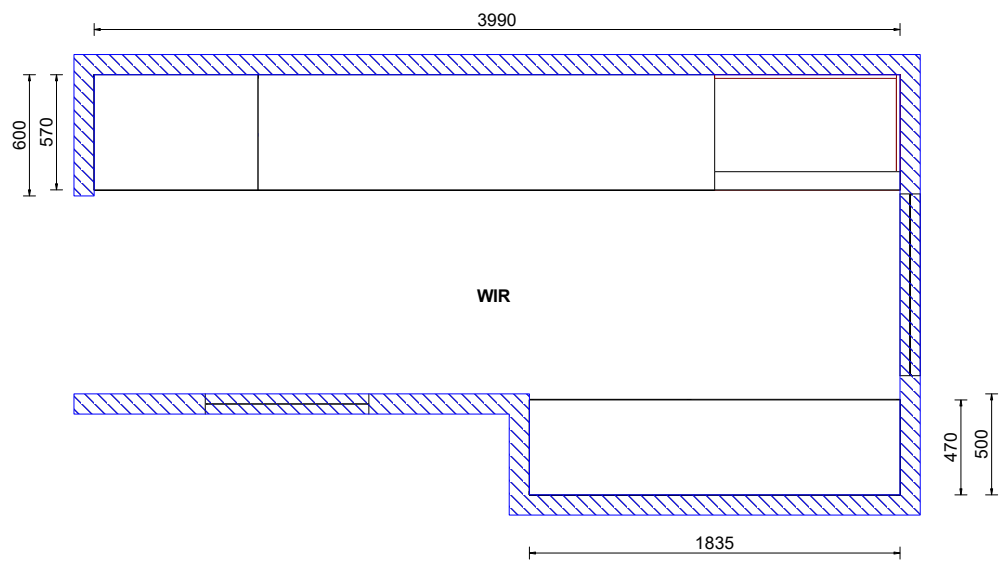
Pantry

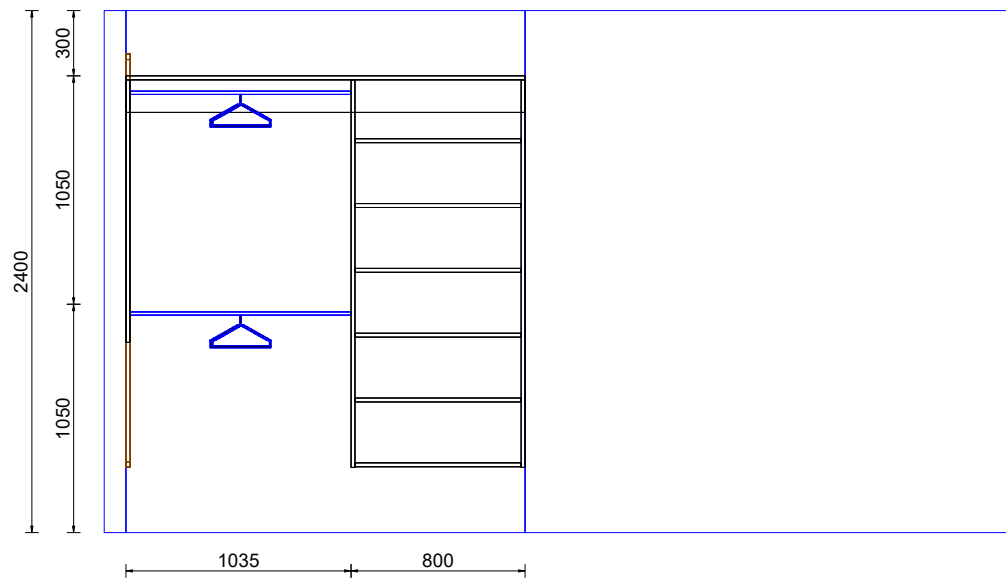
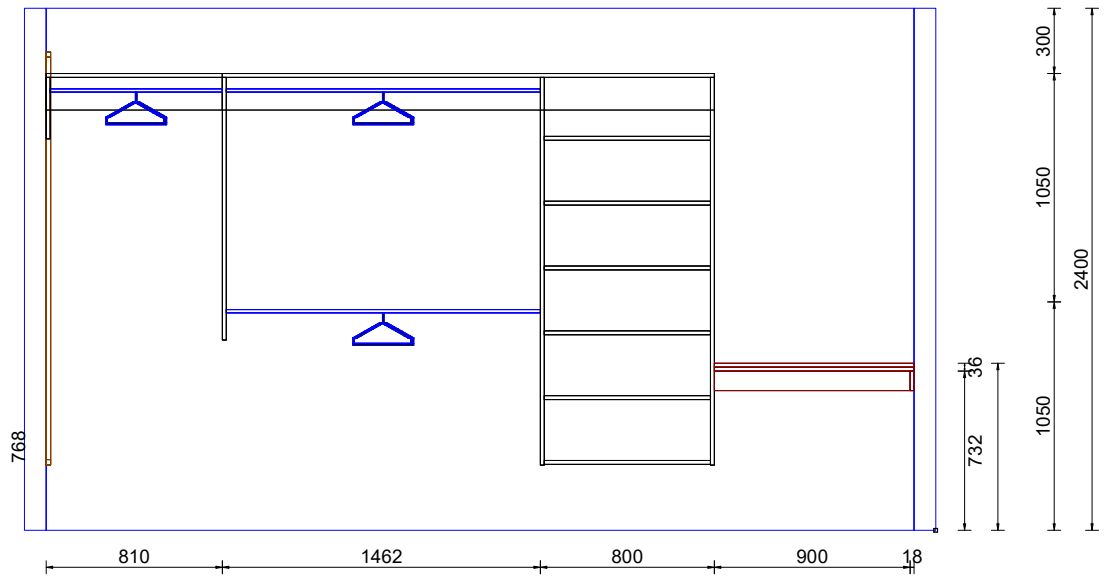


Laundry



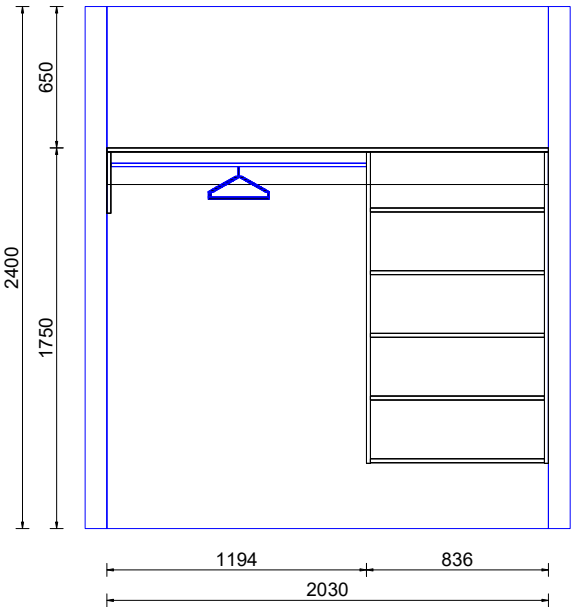
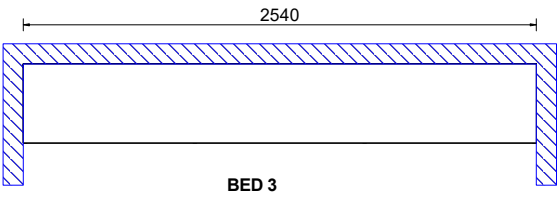
Master Walk-in Robe



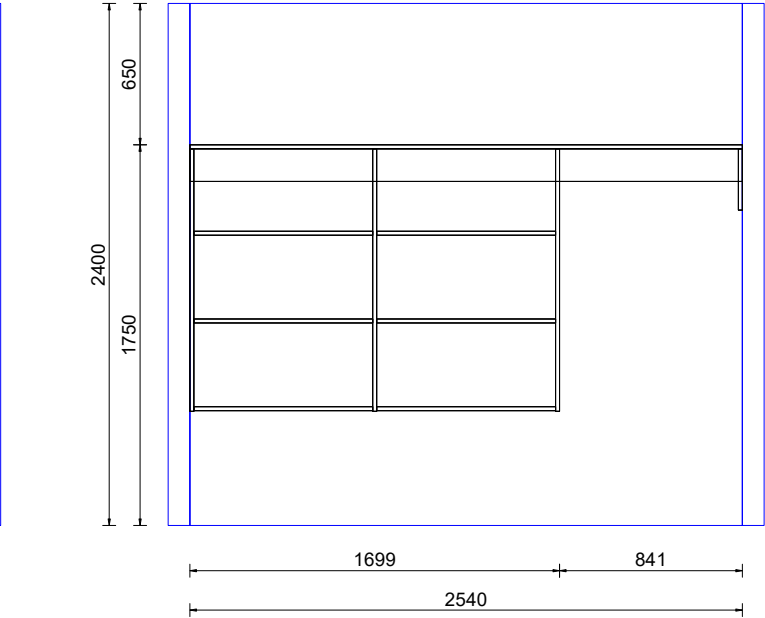
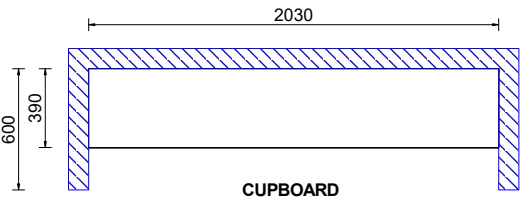


DAVID REID
HOMES

Bed 3 Wardrobe



Hallway Cupboard





Contact Carl today to find out more!

EXPERIENCE THE NEW

David Reid Homes Canterbury
Canterbury Design & Development Ltd

021 0272 8839
Unit 2/213 Blenheim Road,
Christchurch 8149

carl.fordyce@
davidreidhomes.co.nz

View online at
davidreidhomes.co.nz/our-homes/showhomes

DAVID REID
HOMES